



# Update on FCPS Construction/Renovation Projects

May 2019



# Brenda Cowan Elementary

---

- ▶ Architect: EOP Architects
- ▶ General Contractor: Griggs Enterprises
- ▶ GC Contract Sum: \$17,860,200
- ▶ Total Project Cost: \$23,801,841
- ▶ Change Orders to Date (11): \$1,339,364.01
- ▶ Scheduled Contract Completion Date: August 2019
- ▶ % of Contract Completed: **61.94%**
- ▶ Revised Completion Date per GC: Areas C, D & E – August 8, 2019  
Areas A & B – September 11, 2019

# Brenda Cowan Elementary

Schematic Rendering of Final Façade

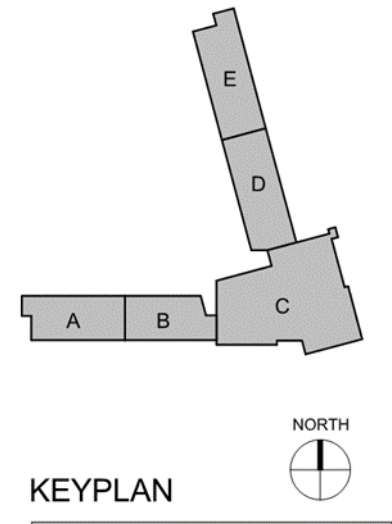


# Brenda Cowan Elementary

---

## ▶ **Work Completed (April):**

- ▶ Roof decking on Sectors A & B
- ▶ Continue spray insulation
- ▶ Continue install of ice & water shield
- ▶ Continue brick in Sectors C, A & B, completed brick in Sectors D & E
- ▶ Continue MEP rough-ins
- ▶ First coat of paint in Sectors D & E
- ▶ Start windows in Sectors D & E
- ▶ Start ceiling grid in Sectors D & E
- ▶ Begin drywall in Admin Area
- ▶ Installed walk-in cooler/freezer
- ▶ Continue retaining wall
- ▶ Complete piers for canopies
- ▶ Started sidewalks in the dock area
- ▶ Continued storm and earthwork

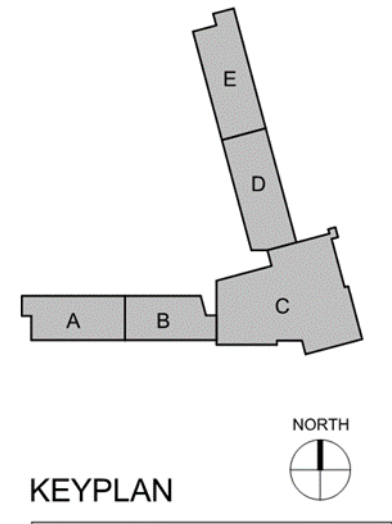


# Brenda Cowan Elementary

---

## ▶ **Current Work Effort (May):**

- ▶ Continue MEP above ceiling
- ▶ Complete windows in Sectors D & E
- ▶ Install ceiling grids in Sectors D & E
- ▶ Install lights, diffusers, sprinkler heads
- ▶ Ceiling grid in Kitchen and lights
- ▶ Start terrazzo in Sectors D & E
- ▶ Start quarry tile in Kitchen
- ▶ Complete retaining walls
- ▶ Paint Gym & Cafeteria ceiling and walls
- ▶ Complete brick in Sector C
- ▶ Install site walls
- ▶ Pour concrete in Loading Dock
- ▶ Set canopy posts
- ▶ Install sod and plants for 1 bioswale



# Brenda Cowan Elementary

Front Approach



Media Ctr. -- Soffits



Gym -- Lighting



Lobby Area



# Brenda Cowan Elementary

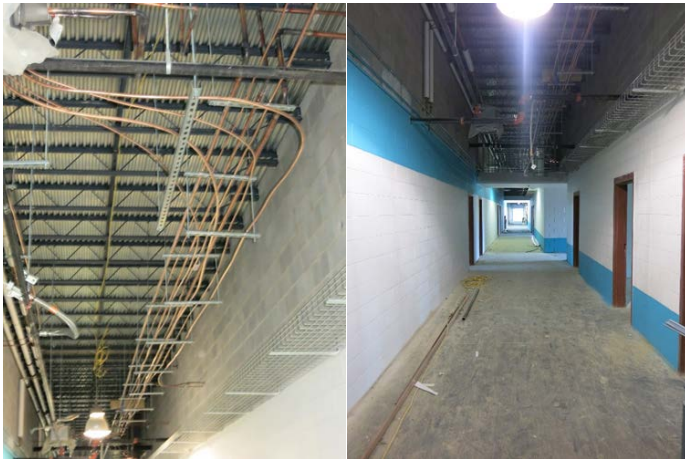
**Kitchen – Freezer/Cooler**



**Sectors A&B – Brick**



**Sections D&E – MEP & 1<sup>st</sup> Coat of Paint**



**Sectors D&E – Brick Completed**

